



Test Report

No. F690101/LF-CTSAYAA15-20492

Issued Date: 2015. 05. 06

Page 1 of 3

KCC CORPORATION

35 Daejuk2-ro, Daesan-eup, Seosan-si
Chungnam
Korea

The following sample(s) was/were submitted and identified by/on behalf of the client as:-

SGS File No. : AYAA15-20492
Product Name : SH0850U_SH0050U
Item No./Part No. : N/A
Received Date : 2015. 04. 16
Test Period : 2015. 04. 16 to 2015. 05. 06
Test Result(s) : For further details, please refer to following page (s)
Result Summary :

Test Requested	Conclusion
US FDA 21 CFR 177.2600 (Rubber Articles) Determination of Amount of Extractives (As per client's request)	PASS

SGS Korea Co., Ltd.

Jeff Jang / Chemical Lab manager

This document is issued by the Company subject to its General Conditions of Service printed overleaf, available on request or accessible at <http://www.sgs.com/en/Terms-and-Conditions.aspx> and, for electronic format documents, subject to Terms and Conditions for Electronic Documents at <http://www.sgs.com/en/Terms-and-Conditions.aspx> and, for electronic format documents, subject to Terms and Conditions for Electronic Documents at www.sgs.com/terms_e-document.htm. Attention is drawn to the limitation of liability, indemnification and jurisdiction issues defined therein. Any holder of this document is advised that information contained hereon reflects the Company's findings at the time of its intervention only and within the limits of Client's instructions, if any. The Company's sole responsibility is to its Client and this document does not exonerate parties to a transaction from exercising all their rights and obligations under the transaction documents. This document cannot be reproduced except in full, without prior written approval of the Company. Any unauthorized alteration, forgery or falsification of the content or appearance of this document is unlawful and offenders may be prosecuted to the fullest extent of the law. Unless otherwise stated the results shown in this test report refer only to the sample(s).

SGS Korea Co., Ltd.

322, The O valley, 76, LS-ro, Dongan-gu, Anyang-si, Gyeonggi-do, Korea 431-080
t +82 (0)31 4608 000 f +82 (0)31 4608 059 <http://www.sgsgroup.kr>

Member of the SGS Group (Société Générale de Surveillance)



Test Report

No. F690101/LF-CTSAYAA15-20492

Issued Date: 2015. 05. 06

Page 2 of 3

Sample No. : AYAA15-20492
 Sample Description : SH0850U_SH0050U
 Item / Part No. : N/A
 Material : N/A

Test Results :

US FDA 21 CFR 177.2600 (Rubber Articles) – Determination of Amount of Extractives

Method :With reference to US FDA 21 CFR 177.2600.

For use in contact with aqueous food:

Extractants	Test Condition	Result (mg/inch ²)	Reporting Limit (mg/inch ²)	Permissible Limit (mg/inch ²)
Distilled Water	Reflux temperature for 7 hours	N.D	0.1	20
	Succeeding 2 hours of extraction	N.D	0.1	1
Comment	--	PASS	--	--

For use in contact with fatty food:

Extractants	Test Condition	Result (mg/inch ²)	Reporting Limit (mg/inch ²)	Permissible Limit (mg/inch ²)
n-Hexane	Reflux temperature for 7 hours	15.4	0.1	175
	Succeeding 2 hours of extraction	1.28	0.1	4
Comment	--	PASS	--	--

Note : 1. mg/inch² = milligram per square inch

2. N.D = Not Detected

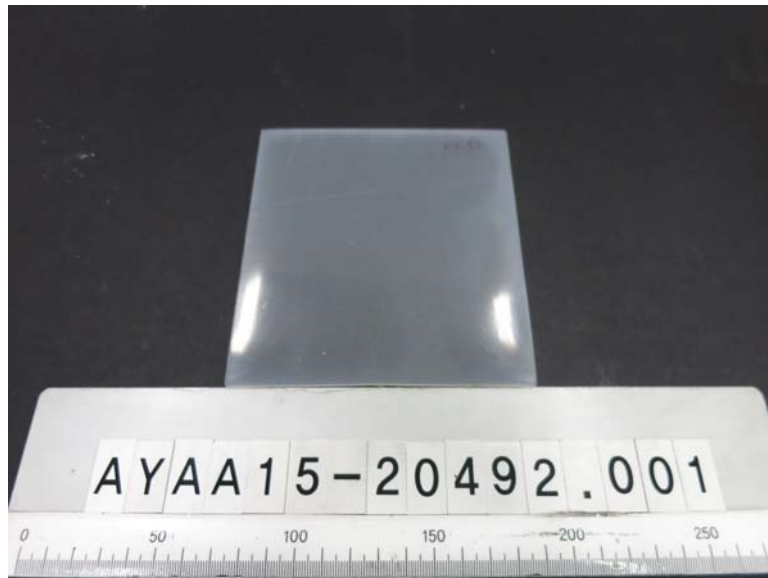
This document is issued by the Company subject to its General Conditions of Service printed overleaf, available on request or accessible at <http://www.sgs.com/en/Terms-and-Conditions.aspx> and, for electronic format documents, subject to Terms and Conditions for Electronic Documents at <http://www.sgs.com/en/Terms-and-Conditions.aspx> and, for electronic format documents, subject to Terms and Conditions for Electronic Documents at www.sgs.com/terms_e-document.htm. Attention is drawn to the limitation of liability, indemnification and jurisdiction issues defined therein. Any holder of this document is advised that information contained hereon reflects the Company's findings at the time of its intervention only and within the limits of Client's instructions, if any. The Company's sole responsibility is to its Client and this document does not exonerate parties to a transaction from exercising all their rights and obligations under the transaction documents. This document cannot be reproduced except in full, without prior written approval of the Company. Any unauthorized alteration, forgery or falsification of the content or appearance of this document is unlawful and offenders may be prosecuted to the fullest extent of the law. Unless otherwise stated the results shown in this test report refer only to the sample(s).

SGS Korea Co., Ltd.

322, The O valley, 76, LS-ro, Dongan-gu, Anyang-si, Gyeonggi-do, Korea 431-080
 t +82 (0)31 4608 000 f +82 (0)31 4608 059 <http://www.sgsgroup.kr>

Member of the SGS Group (Société Générale de Surveillance)

Picture of Sample as Received :



*** End of Report ***

This document is issued by the Company subject to its General Conditions of Service printed overleaf, available on request or accessible at <http://www.sgs.com/en/Terms-and-Conditions.aspx> and, for electronic format documents, subject to Terms and Conditions for Electronic Documents at <http://www.sgs.com/en/Terms-and-Conditions.aspx> and, for electronic format documents, subject to Terms and Conditions for Electronic Documents at www.sgs.com/terms_e-document.htm. Attention is drawn to the limitation of liability, indemnification and jurisdiction issues defined therein. Any holder of this document is advised that information contained hereon reflects the Company's findings at the time of its intervention only and within the limits of Client's instructions, if any. The Company's sole responsibility is to its Client and this document does not exonerate parties to a transaction from exercising all their rights and obligations under the transaction documents. This document cannot be reproduced except in full, without prior written approval of the Company. Any unauthorized alteration, forgery or falsification of the content or appearance of this document is unlawful and offenders may be prosecuted to the fullest extent of the law. Unless otherwise stated the results shown in this test report refer only to the sample(s).